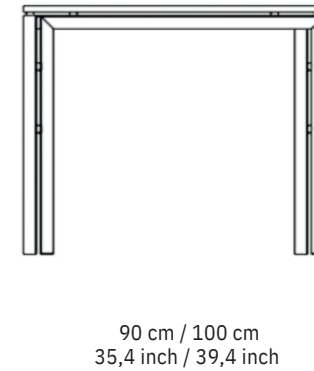
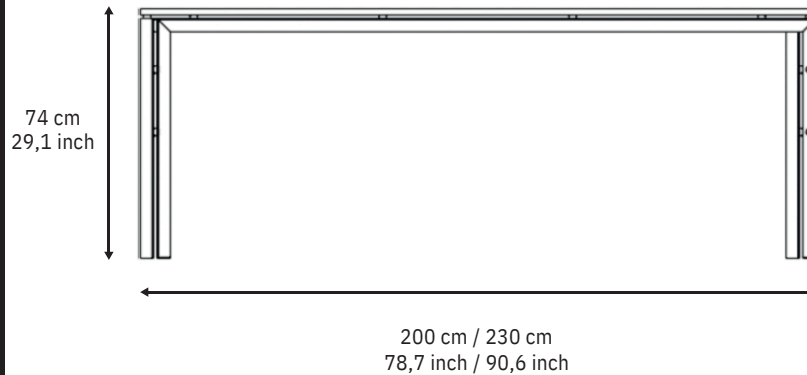


# WT-TABLE Mesa

KAREL MARTENS

## ARCHIVOS 3D O IMÁGENES HR ESPECIFICACIONES

[www.functionals.eu/downloads](http://www.functionals.eu/downloads)



### Sobre de la mesa:

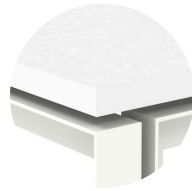
Core: Chipboard 19mm  
Top: Duropal HPL (Pfleiderer)  
Bordes: ABS blanco, negro, o  
madera contrachapada

### Patas de la mesa:

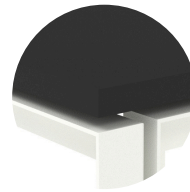
Patas: Acero soldado Perfil en L  
de 3 mm  
Deslizador: Teflón  
Separadores: PVC

### Medidas:

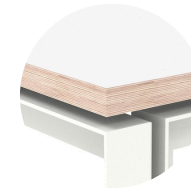
200x90x74 cm: 48 kg - 105,8 lb.  
230x100x74 cm: 57 kg - 125,7 lb.



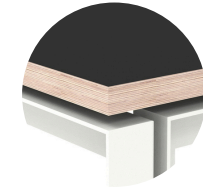
Blanco/Blanco



Blanco/Negro



Blanco/Madera  
contrachapada/Blanco



Blanco/Madera  
contrachapada/Negro



Negro/Negro



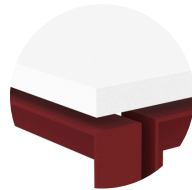
Negro/Blanco



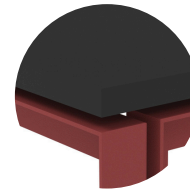
Negro/Madera  
contrachapada/Blanco



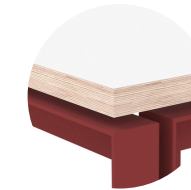
Negro/Madera  
contrachapada/ Negro



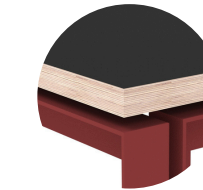
Óxido/Blanco



Óxido/Negro



Óxido/Madera  
contrachapada/Blanco



Óxido/Madera  
contrachapada/Negro

FUNCTIONALS

Unnom  
singular projects

### Functionals

Edisonstraat 5  
NL-5051 DS Goirle  
tel. +31 (0)13 530 03 89  
info@functionals.eu  
www.functionals.eu

